



Introducing Diverflow with Sure Link™  
**Cover the full spectrum  
of your cleaning needs**





From manual ware washing to counters, restrooms to floors, the Diverflow with Sure Link system from Diversey covers the full spectrum of your cleaning needs while delivering sustainable results – consistently, safely, simply.

The Diverflow with Sure Link wall-mounted system maximises usable space and has the ability to meet all of your cleaning needs.


- Consistent dilution of each product allows staff to precisely fill bottles, sinks and buckets with the correct strength solutions to minimise over or under usage.
- Safety features such as the innovative cap-lock system and mechanical bottle lock-out assure correct product placement.
- With the simplicity of pushing a button, staff can be trained efficiently and effectively.

**Diverflow with Sure Link significantly reduces plastic and cardboard packaging—helping to reduce your overall environmental footprint.**

The gravity feed design of the system completely empties pouches leaving virtually no chemical left, ensuring you receive the full benefit of our highly concentrated solutions. Each case contains enough to fill 100's of buckets and sinks or 1000's of bottles with ready-to-use solution\*.

\*Depending upon application.

**Suma Multi Conc D3**  
Diverflow with Sure Link



The exact amount of product is dispensed.

Water flows into the system.

And a perfectly diluted solution is released.

# Consistent

*Precise product dilution helps deliver consistent results.*

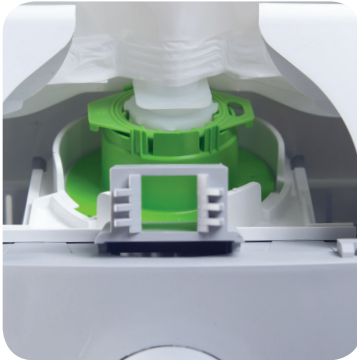
Diverflow with Sure Link maintains the integrity of your cleaning solutions and helps to ensure the proper mix of concentrated product and water is released.

The reservoir can be filled or refilled without being emptied first and still maintains an accurate dilution. With Diverflow with Sure Link, you can leave the calculating to the system, so your employees can concentrate on cleaning.

Each color-coded pouch only fits into its corresponding colored lock.



The Sure Link cap-lock system is designed to virtually eliminate incorrect product placement.



As an added measure of safety, the mechanical bottle lock-out ensures the right bottle is filled.



## Safe

*Dispenser and captive packaging design reduces errors and decreases exposure to concentrated products.*

The Diverflow with Sure Link patented features reduce incorrect product placement and accidental use.

- The innovative color-coded cap-lock system and mechanical bottle lock-out feature ensure the right product is dispensed in the correct bottle.
- The system's wall-mount design creates a clutter-free environment for staff.

As simple as pushing a button.



# Simple

*Simple-to-use system makes training and operation quicker and easier.*

Diverflow with Sure Link features color-coded dispensers, pouches, and bottles to help ensure your staff identifies the right product to achieve the right results.

- Easy to load pouches and bottles ensure a quick and simple pouch change or bottle refill.
- Enables staff to be trained quickly and effectively.

With the simplicity of pushing a button, you can be sure that Diverflow with Sure Link is the complete system for all of your cleaning needs.

# The total solution

There's a Diverflow with Sure Link product for all your key cleaning needs.

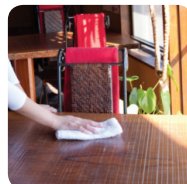
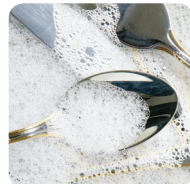
**Manual Ware Wash**  
Suma® Star Plus D1 is a heavy duty grease fighting formula for pots and pans that is safe to use on surfaces. Its quick-acting foam and suds are easy on hands. This ultra-concentrated detergent will cut through grease and remove dried-on food.



**Multipurpose**  
Suma Multipurpose conc D3 handles everything from heavy duty cleaning to general purpose cleaning, from glass cleaning to hand dishwashing. It is formulated to remove oil and dirt found in kitchens and leaves no residue even when used on glass.



**Sanitiser**  
Formulated to ensure your sanitising requirements are met, Suma Bac conc D10 is specifically designed for effective sanitisation of hard, food contact surfaces, utensils and ware.



**Floorcare**  
TASKI® Jontec Forward is a heavy-duty cleaner designed to remove soils and oils from floors and walls.

**Washroom**  
TASKI Sani Cid is specifically developed to keep toilet bowls clean and free of stains.

**Glass**  
TASKI Sprint Glass is a concentrated glass cleaner is perfect for cleaning a variety of surfaces including windows, glass, mirrors, plastic, vinyl and/or metal.





# Sustainable

*Improve operational efficiency and staff safety while reducing your environmental footprint.*

Diverflow with Sure Link helps your business be more sustainable by:

- Utilising a closed loop system which enables the use of highly concentrated product for optimal efficiency.
- Completely emptying pouches with virtually no residual chemical left due to the gravity style feed.
- Reducing waste through its simplified product packaging and recyclable pouches.

Diversey expertise in sustainable innovations is demonstrated through key features of Diverflow with Sure Link. Now you can be confident that you are utilising a cleaning system that delivers highly sustainable results each and every time.

# Cover the full **spectrum** of your cleaning needs.

Diverflow with Sure Link™

At Diversey, we understand that your focus is on making your operation the best it can be. With Diverflow with Sure Link, you can be confident that you are utilising a cutting edge dilution control system that covers the full spectrum of your cleaning needs.

**Consistent. Safe. Simple.**





Diversey has been, and always will be, a pioneer and facilitator for life. We constantly deliver revolutionary cleaning and hygiene technologies that provide total confidence to our customers across all of our global sectors.

Diversey is headquartered in Fort Mill, SC, USA. For more information, visit [www.diversey.com](http://www.diversey.com) or follow us on social media.



[www.diversey.com](http://www.diversey.com)